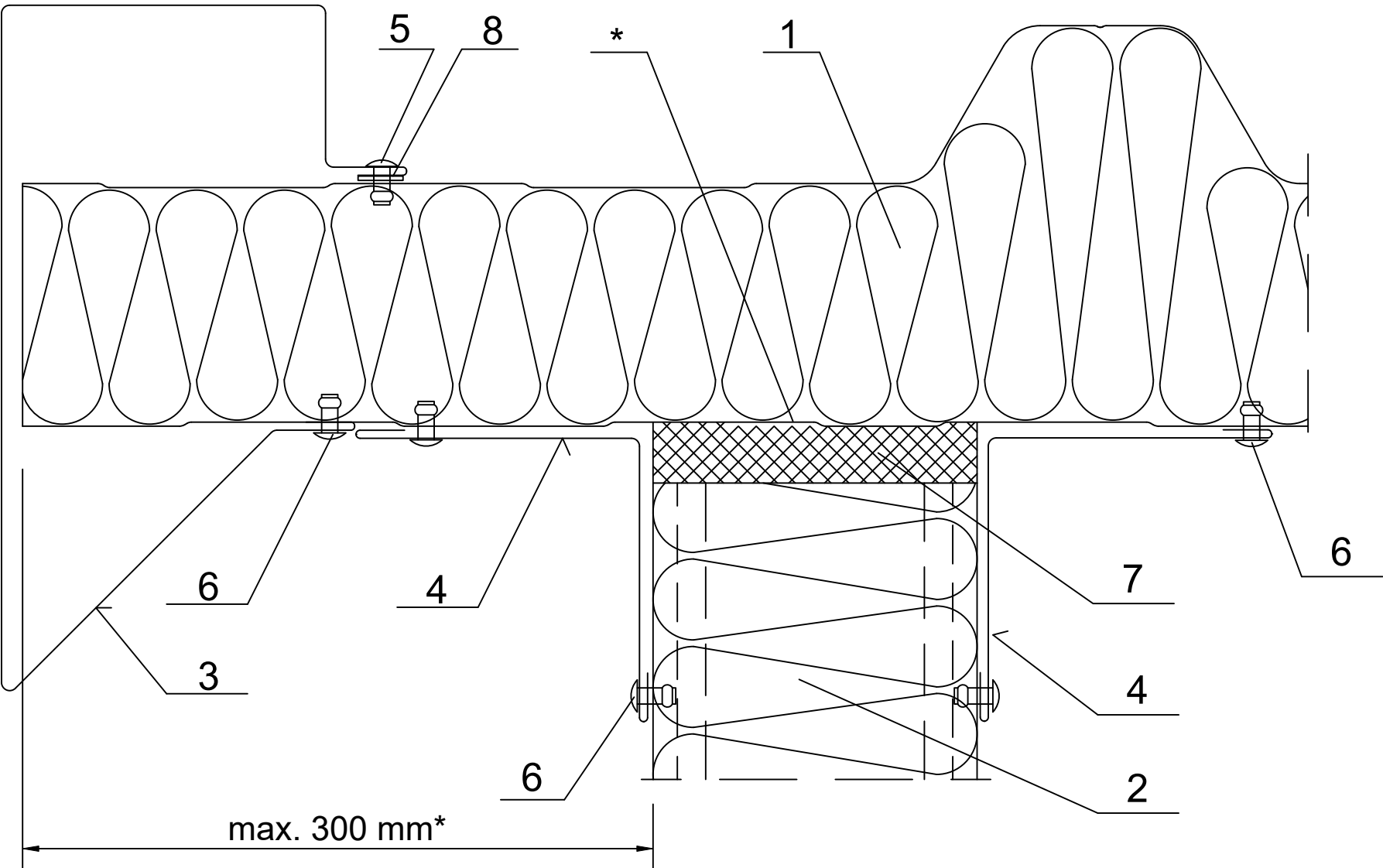
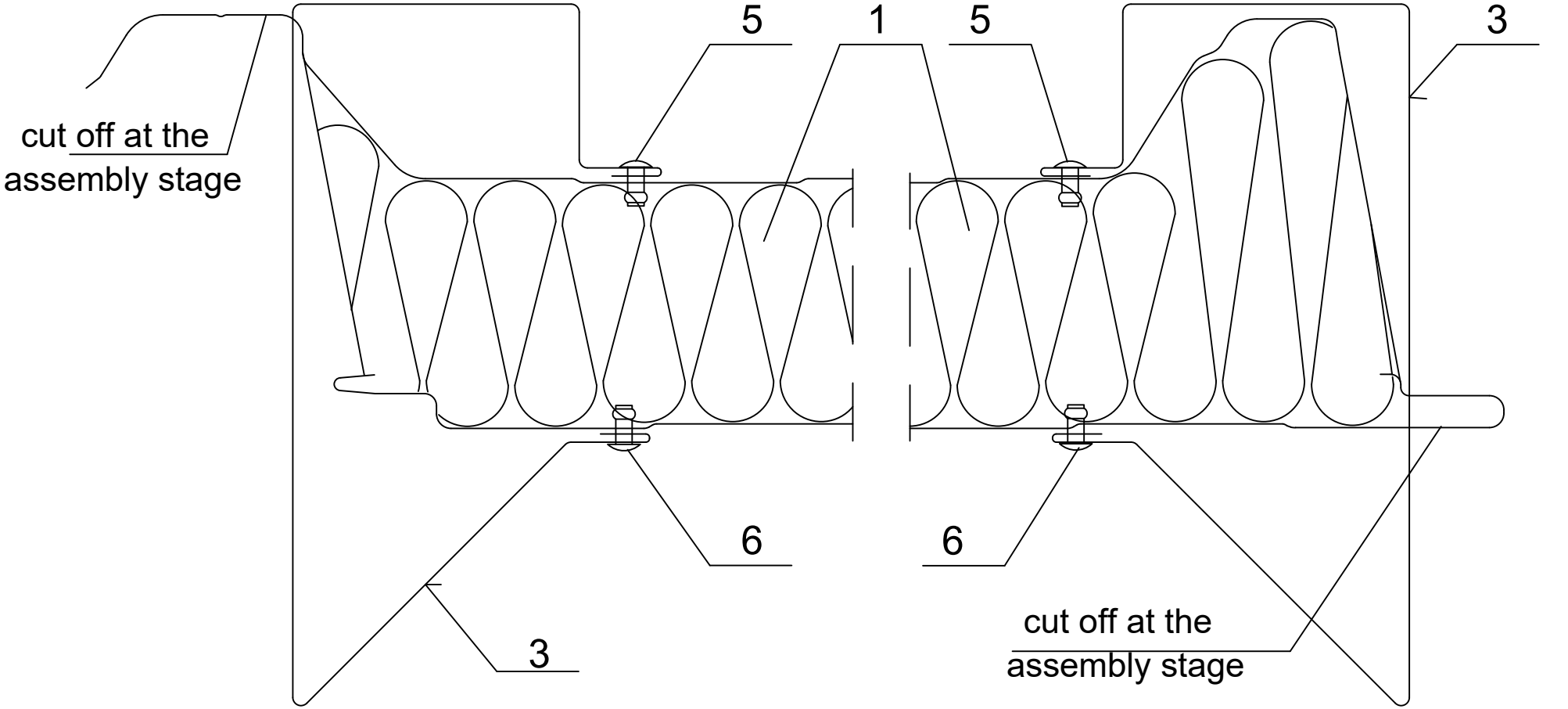


Date	Rev. date	Work nr.	Drw. nr.	Rev.
Drawn by Ruukki	Rev.	M04/S06	-	
Scale 1:3	Building	File nr. P2001/003-00038		



1. Ruukki SP2C PIR

2. Ruukki wall composite panel

3. EA1B14 peak closing flashing

4. EA1B05 corner flashing

5. Watertight rivet (every 300 mm)
6. Steel rivet (every 300 mm)

7. Impregnated polyurethane sealant or expanded foam

8. Butyl tape

* for structures with high requirements regarding thermal insulation facing gap is ~30 mm; in this case the maximum support length is 300 mm